



*AFRICA AWAITS*

# CLUSTER LEAF SAFARIS

---

Your African Adventure, Meticulously Crafted  
for an Unforgettable Experience  
NAMIBIA | BOTSWANA | ZIMBABWE | ZAMBIA

Established 2015

# Welcome to Cluster Leaf Safaris

*"The natural world is the greatest source of excitement. The greatest source of visual beauty. It is the greatest source of so much in life that makes life worth living."*

— Sir David Attenborough

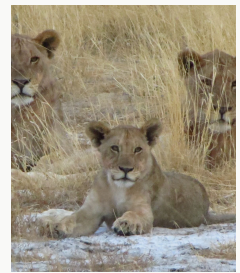
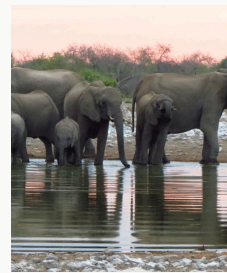


Cluster Leaf Safaris invites you to experience Africa in its most authentic form. Based in Windhoek, Namibia, we are an owner-operated tour operator specializing in personalized, mid-range to luxury guided adventures across Southern Africa.

Since our establishment in 2015, we have been committed to delivering memorable, personal, and professional safari experiences. We craft each journey to exceed your expectations.

## Our Promise:

- ✓ Personalized, client-tailored itineraries
- ✓ Professional, knowledgeable guidance
- ✓ Sustainable and responsible tourism
- ✓ Unforgettable wildlife encounters



# About Us





FEATURED SAFARIS

## 10-Day Botswana Glamping Safari

*"Explore the Okavango Delta Under Canvas!"*



## NORTH TO SOUTH

MID-RANGE | EASY ACTIVITY

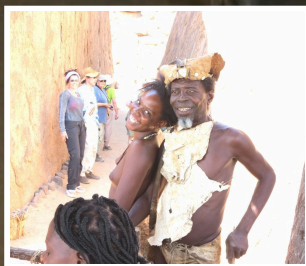
This comprehensive tour showcases Namibia's diversity, from big cat conservation to desert landscapes, coastal towns to ancient dunes.

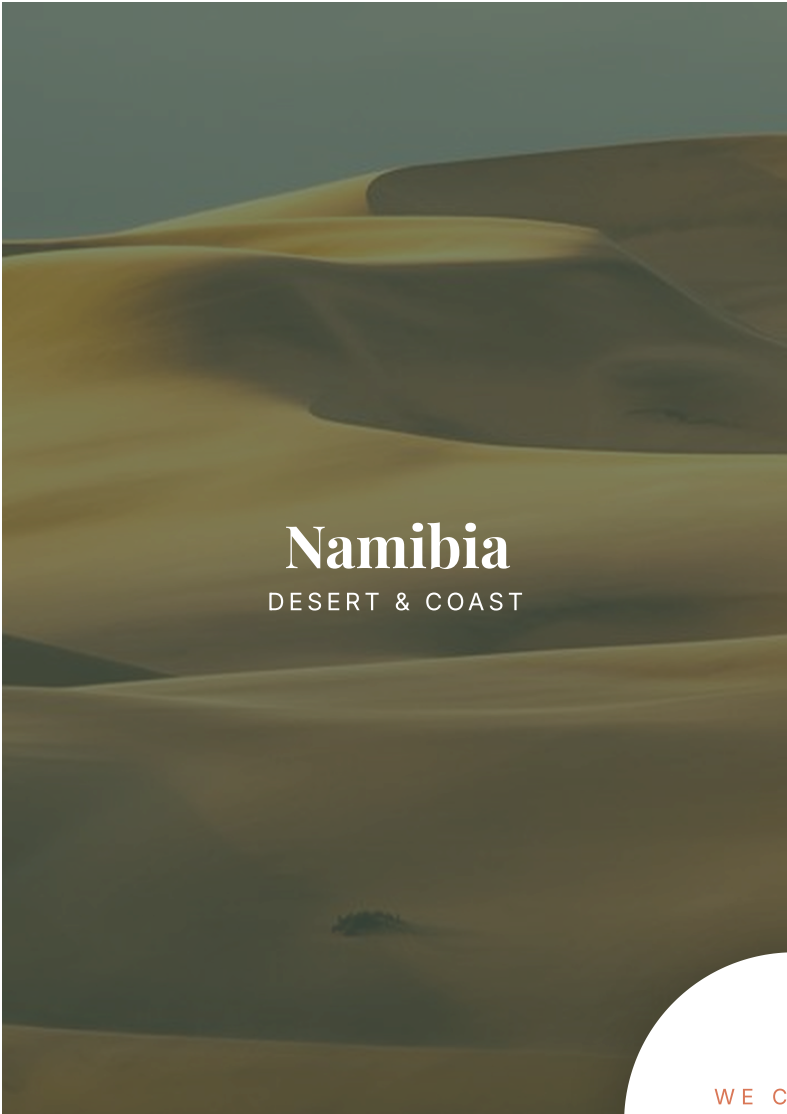
- **Days 1-2:** Okonjima Leopard Tracking
- **Days 3-5:** Etosha National Park
- **Days 6-7:** Damaraland & Twyfelfontein
- **Days 8-9:** Swakopmund & Coast
- **Days 10-12:** Sossusvlei → Windhoek

# Classic Namibia

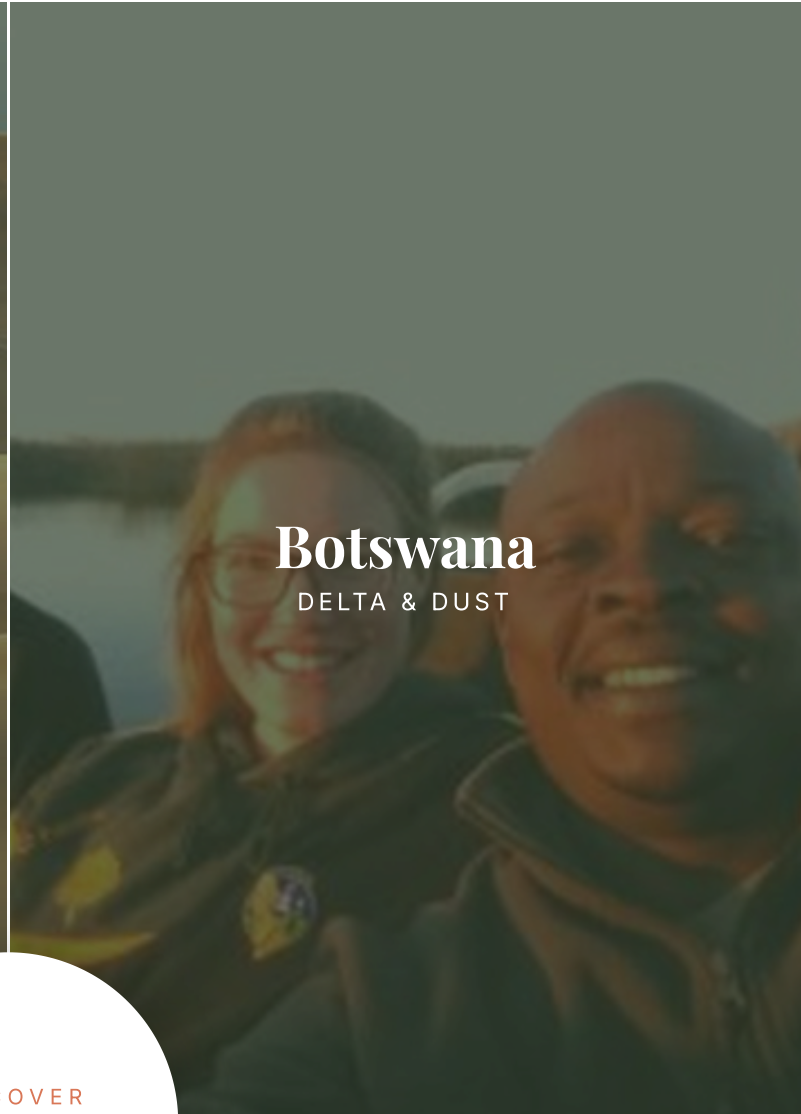
12-Day Exploration





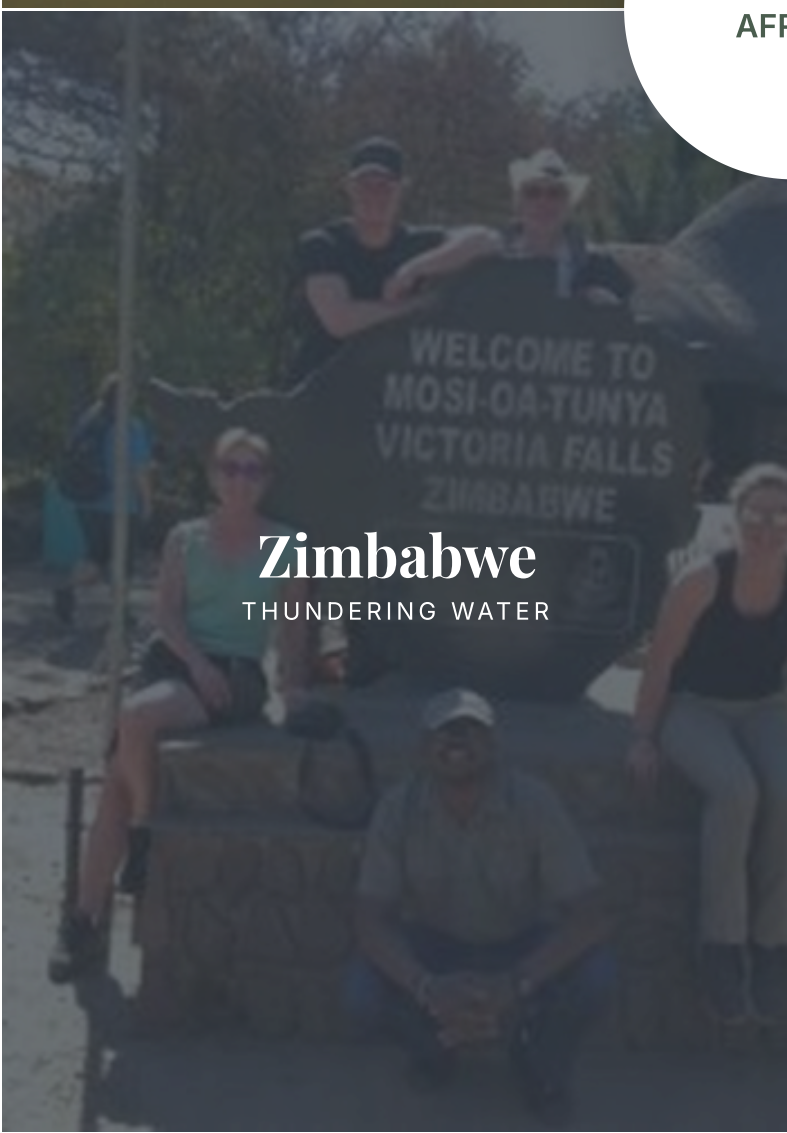


**Namibia**  
DESERT & COAST



**Botswana**  
DELTA & DUST

WE COVER  
AFRICA



**Zimbabwe**  
THUNDERING WATER



**Zambia**  
WILD BEYOND





# Why Choose Us?

---

## **Personalized Service**

Every safari is custom-tailored to your interests, fitness level, and budget. One-on-one consultation with Mr. T ensures your dream itinerary.

## **Expert Guidance**

Travel with a Commercial Pilot and professional guide who has over a decade of experience in Southern African ecosystems.

## **Elite Accommodations**

Clean, comfortable, and strategically located. We partner with properties that provide an authentic African touch.

## **Sustainable Tourism**

We believe in protecting the natural wonders we visit, supporting local communities and minimizing environmental impact.

# Plan Your Safari

---



## FAQ

### Best time to visit Namibia?

*April to October (Dry season) offers peak wildlife viewing.*

### Suitable for families?

*Absolutely! We customize activities to suit all ages.*

### What type of vehicles?

*Maintained 4x4 safari vehicles with pop-up roofs for optimal viewing.*

### Dietary restrictions?

*Informed at booking, we cater to all requirements.*

Ready for your African adventure?

**Let us craft your getaway.**

